

**Interreg
Europe**



European Union | European Regional Development Fund



*Sharing solutions
for better regional policies*

Interreg Europe



Summary

- **Key programme features**
- **Results of previous calls**



KEY PROGRAMME FEATURES



Interreg Europe rationale

Objective set in the ETC Regulation - Article 2(3)(a) for interregional cooperation:

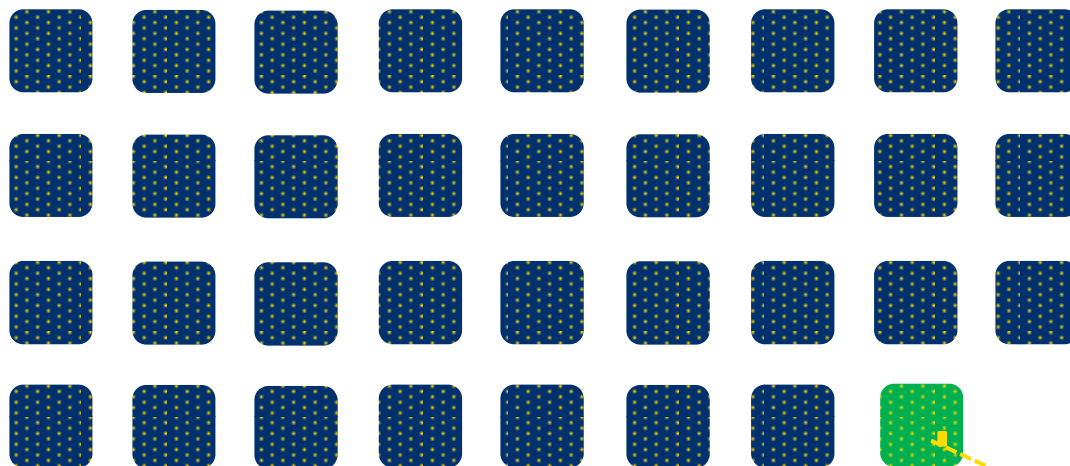
- “to reinforce the effectiveness of **cohesion policy**”
- “identification and dissemination of good practices with a view to their transfer principally to operational programmes under the **Investment for growth and jobs** goal but also, where relevant, to cooperation programmes”



Interreg Europe rationale

Exchange of experience to improve performance of policies for regional development, in particular **Structural Funds (SF)** programmes

EU Cohesion policy



Goal 1:
Investment for growth & jobs
EUR 340 billion

Goal 2:
European Territorial Cooperation
EUR 10.2 billion

INTERREG EUROPE
EUR 359 m

Improving performance of policy instruments



What is a policy instrument?

- Means of public intervention (policy, strategy or law) developed by public authorities
- Example: Structural Funds Operational Programmes

How to improve a policy instrument?

1. Implement **new projects**
 2. Change programme **governance**
 3. Change programme **content**
- } May not require funding!



1. Implement new projects



Practice:

Research & development Card: advisory & financial support to SMEs for the development of innovative products

From: Västra Götaland (SE) To: Lower Silesia (PL)



5.4 million zł (MEUR 1.35) financed from the ESF Operational Programme of Lower Silesia

2. Change programme governance



Modification of the monitoring system for the evaluation of the innovation measures in the regional operational programmes of:

- Bretagne (FR)
- PACA (FR)
- Puglia (IT)
- Wielkopolska (PL)

3. Change programme content



Partner

Bulgarian Ministry of Labour and Social Policy

Improved policy

Bulgarian ESF development programme

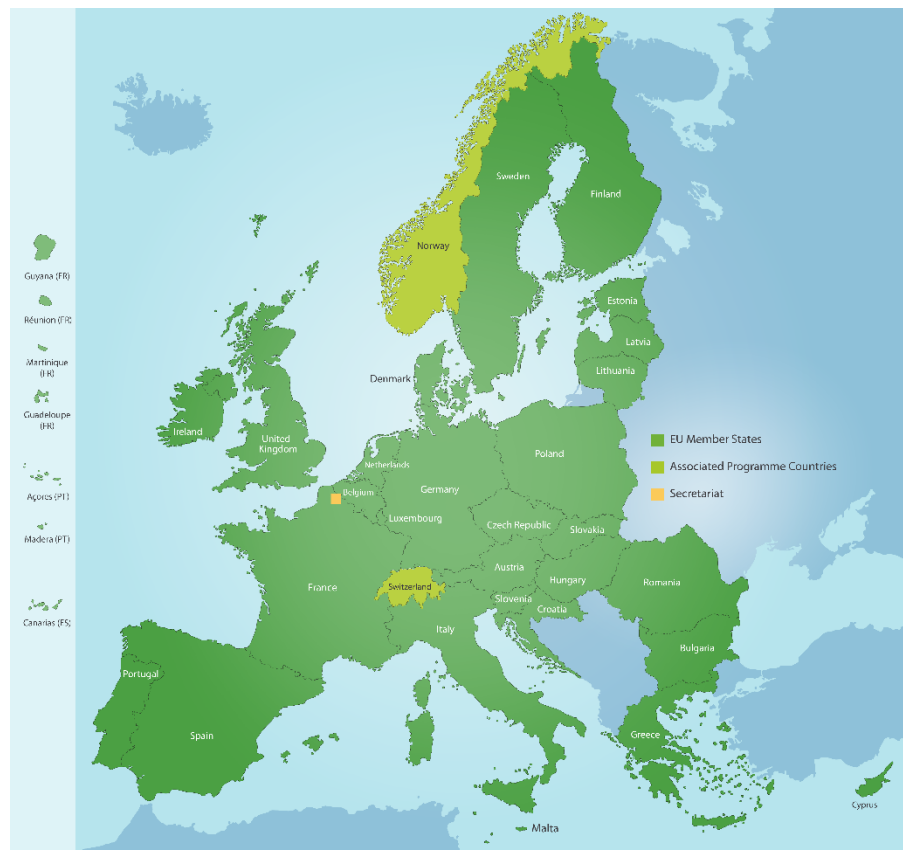
ESF 'Development' programme tackling unemployment after mass redundancies in enterprises. Thanks to the project, the programme was modified to include preferential treatment to people age 50+.



Geographical & thematic focus

The only Interreg covering
EU 28 + NO & CH

A thematic programme





Target groups

**Managing
authorities**

**Regional / local
authorities**

**Agencies, institutes,
private non-profits**

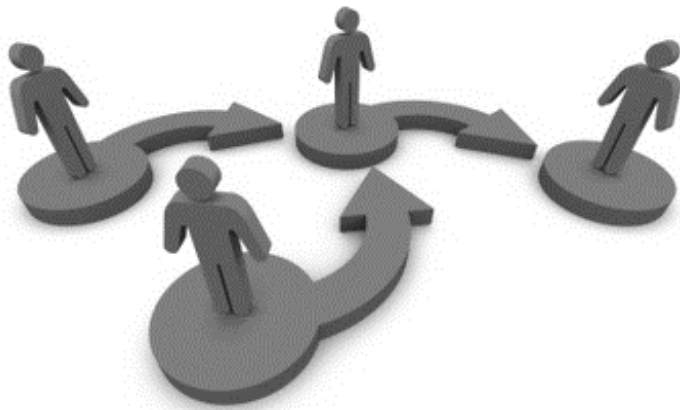


Learn from each other
to improve policies

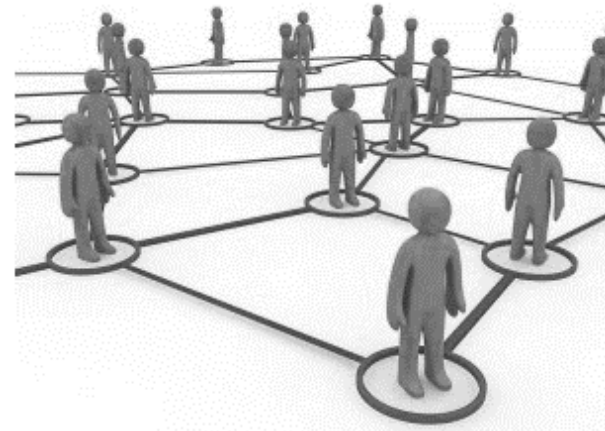


Supported actions

A. Policy learning platforms



B. Projects





A. PLATFORMS



Platforms: objectives



facilitate continuous **policy learning** across EU by creating a community of **policy makers & practitioners** to improve regional policies

- Better exploit projects' results
- Open up the programme results to anyone interested

Internal capitalisation

External capitalisation



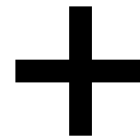
Platforms: definition



A service-portfolio provided
per priority axis via:

Online collaborative tool

With relevant functionalities



Expert team

Content and coordination role

Services accessible to all public

Knowledge bank



- Good practices Database
- Policy recommendations,
- EU policy news
- Thematic studies

Networking opportunities



- Practitioners Database
- Matchmaking events
- Discussion forums
- Partnering events

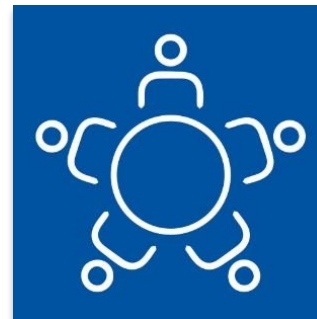
Services accessible to registered members

Expert helpdesk



- Policy advice
- Guidance in the databases
- Analysis data
- Updated information

Expert support



- Peer reviews
- Benchmarking exercises
- Thematic workshops
- Capacity building events



Platforms: launch at EWRC

European Week of
Regions and Cities | Brussels
10-13 October 2016

[Home](#) [About](#) [Contact](#)

Policy learning lab: Practical approaches for smart and sustainable regions



The Policy Learning Platforms form the second pillar of initiatives under the Interreg Europe Programme, alongside the interregional cooperation projects. They offer a space for continuous learning where any organisation dealing with regional development policies in Europe can find solutions to improve the way they manage and implement

The experts then continued their presentation of the objectives and the key services that platforms users would be able to benefit from, totally free of charge. These are divided into two categories.

The first is available to the general public and includes free access to an extensive knowledge bank consisting of

policy advice regarding regional development issues, guidance in good practices and practitioners' databases. The expert support increases in complexity through a choice of policy learning events, thematic workshops, online e-learning geared to users' interests and an exclusive offer of peer reviews and benchmarking exercises



Simpler funding

Workshop code

11A49

Workshop day/time

October 11, 14:30 - 17:00

Organiser(s)

Interreg Europe

Moderator

Ieva Kalnina, Community Manager, Interreg Europe Policy Learning Platforms, Latvia

Chair

Peter Heydebreck, Lead Manager, Interreg Europe Policy Learning Platforms, Germany

Speakers

Erwin Siweris, Programme Director, Interreg Europe Programme, France
Peter Heydebreck, Lead Manager, Interreg Europe Policy Learning Platforms, Germany



Platforms: activities

First thematic content **online**: articles, news, events



Research and innovation



SME competitiveness



Low-carbon economy



Environment and resource efficiency



16/02/2017

Help us shape the Policy Learning Platforms!

The Interreg Europe Programme needs your input in shaping the details of the Policy Learning Platforms.

Type: [Platform](#)



15/02/2017

Policy Brief on industrial symbiosis

Industrial symbiosis is one of the tools European regions and cities can use when building a circular economy model. Read our Policy Brief to learn how?

Type: [Platform](#)



08/02/2017

Silver economy and Interreg Europe projects

Ageing population is one of the challenges faced by EU regions. Meanwhile, it is also an opportunity for growth and jobs in what it is called "Silver Economy".

Type: [Platform](#)



29/01/2017

Policy Brief on the SME policy of the European Union

This Policy Brief sums up the key initiatives and policies forming the SME policy of the European Union.

Type: [Platform](#)

SHARE





Platform: how to get involved?

- Sign up to Interreg Europe community
www.interregeurope.eu/policylearning
- Follow the upcoming events in 2017:
 - Networking events combined for TO1+TO3 & TO4 +TO6
 - Policy Learning events per TO
 - Thematic Workshops per TO



B. PROJECTS



Projects: main features

Definition

- Partners from different countries working together on a shared regional policy issue (within the thematic scope of the programme).....

Objective

-to improve the effectiveness of the policy instruments of the regions involved in the project (in particular their Investment for Growth and Jobs programmes)



Projects: features

Implementation in 2 phases

Phase 1



Policy exchange of experience (1 to 3 years) ending with production of 1 **action plan** per region

Phase 2

Monitoring of action plan implementation (2 years) + possible pilot actions

Focus on Structural Funds

At least half of policy instruments addressed must be SF

Projects: partnership requirements



- Min 3 countries represented
Recommendation: between 5 to 10 partners
- **Involvement of policy responsible organisations**
 - Directly as partners
 - Indirectly through **letter of support** (and through participation in stakeholder groups)
- Creation of stakeholder groups
 - Contribute to success of learning process by involving all relevant organisations
 - Reduce obstacles to action plan implementation



Projects: who is eligible?

- Public bodies (main target group)
(e.g. local, regional, national authorities)
- Bodies governed by public law (Directive 2004/18/EC)
- Private non profit bodies

Co-financing rates	According to legal status or location
85% ERDF	Public or public equivalent from EU
75% ERDF	Private non-profit from EU
50% Norwegian funding	Public, public equivalent and private non-profit from NO
Swiss funding	Public, public equivalent and private non-profit from CH



Projects: what do we finance?

Exchange of experience activities among project partners

- such as study visits, peer reviews, staff exchanges

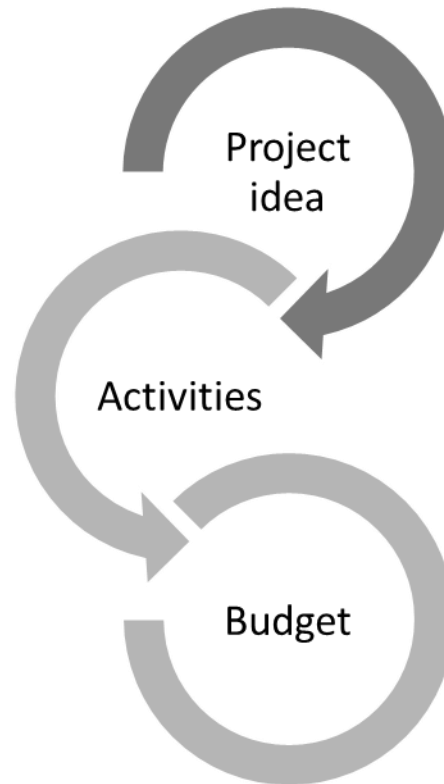
How?

Budget line	
Staff	the core of the budget (usually 50%)
Administration	15% flat rate of staff costs
Travel and accommodation	only for the staff members of the partner organisation
External expertise and services	any services needed outside the partner organisation +travel and accommodation for stakeholder groups/external experts (usually below 50%)
Equipment	office equipment (not exceeding EUR 5000-7000)



Projects: what do we finance?

Estimate the budget based on your activities!



Average ERDF budget per project is between 1 - 2M€



Projects: simplifications

Online (OLF) system

- Application, report, request for changes

More budget flexibility

- 20% flexibility rules within approved budget
- No financial reporting per component

Fewer control steps

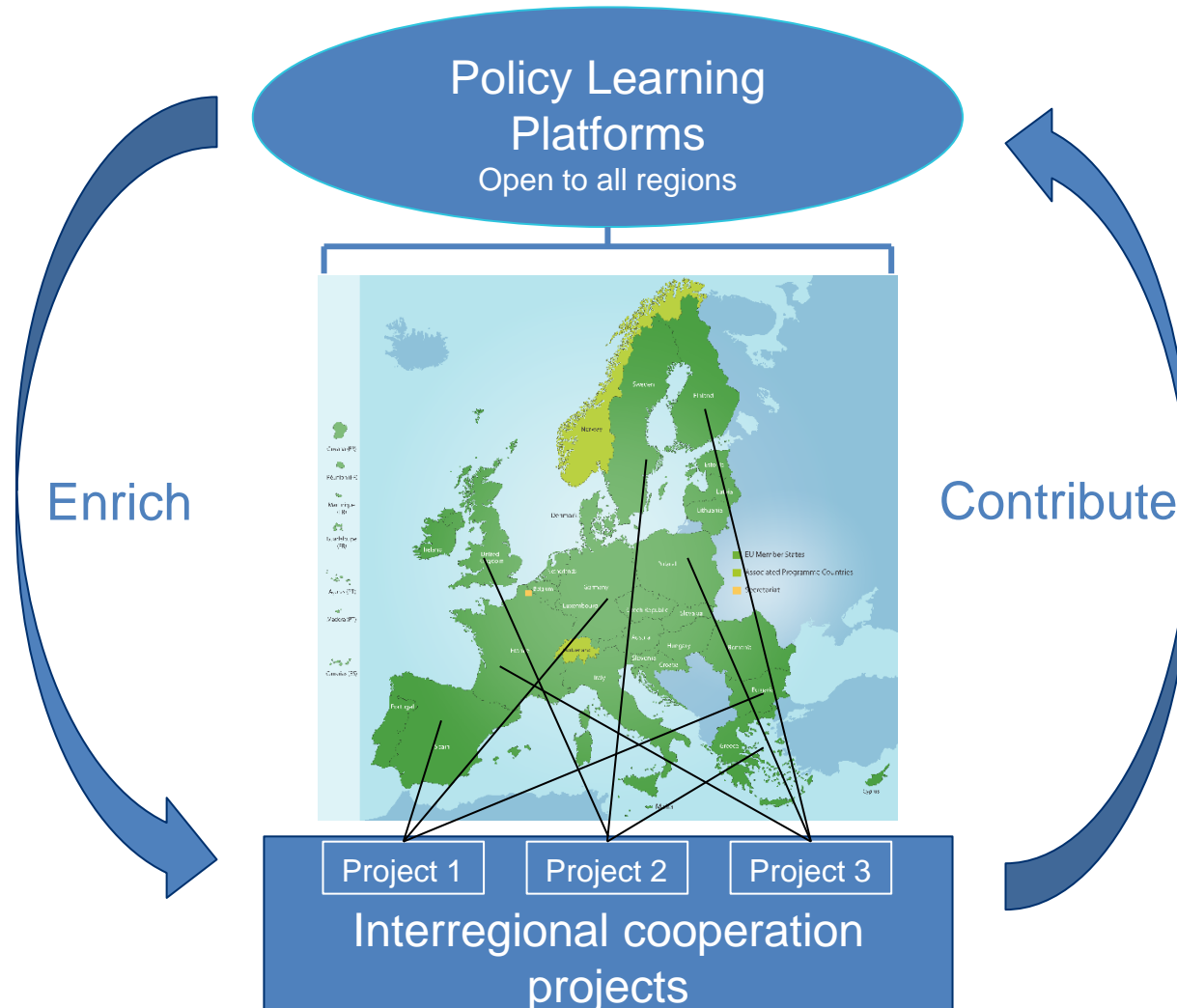
- No reconfirmation of partnership cost on lead partner level

Simpler administration

- Lump sum preparation costs (EUR 15,000)
- Flat rate administration costs (15% of staff costs)



Two interrelated actions



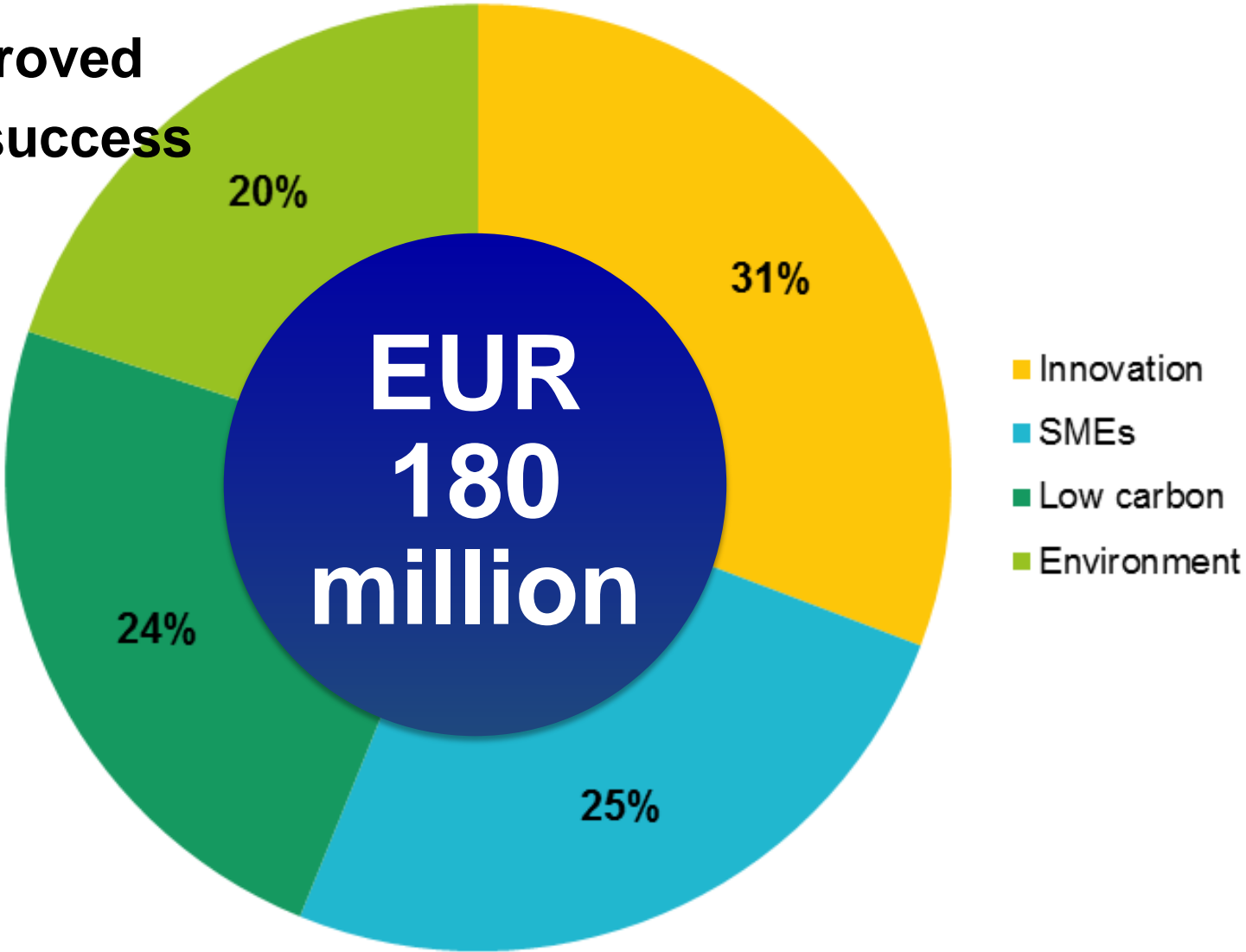


CALL 1 & 2 RESULTS



Call results

472 submitted
130 approved
27.5 % success



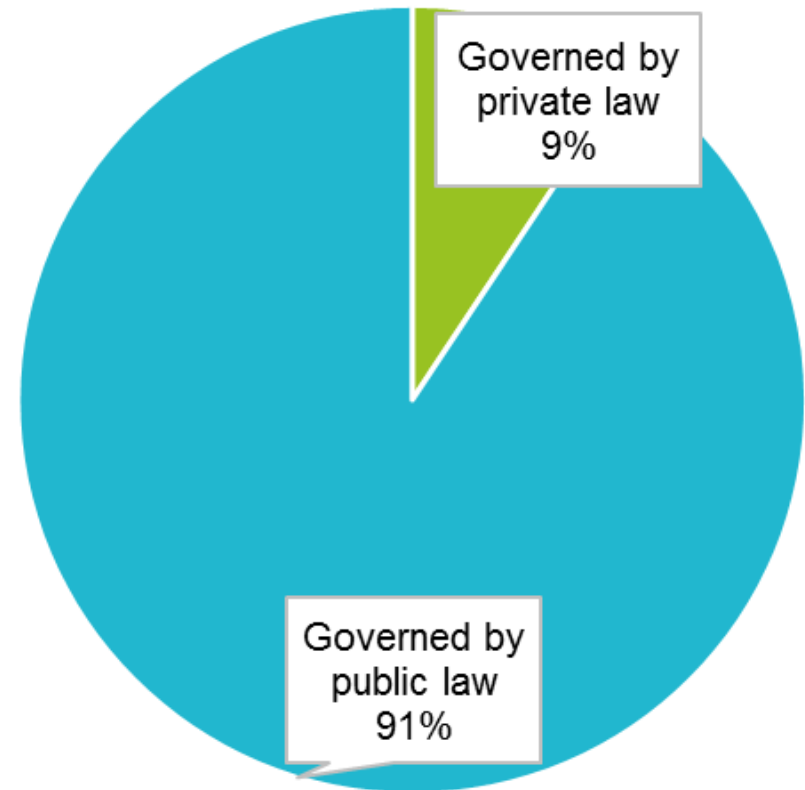


Call results

Geographic coverage



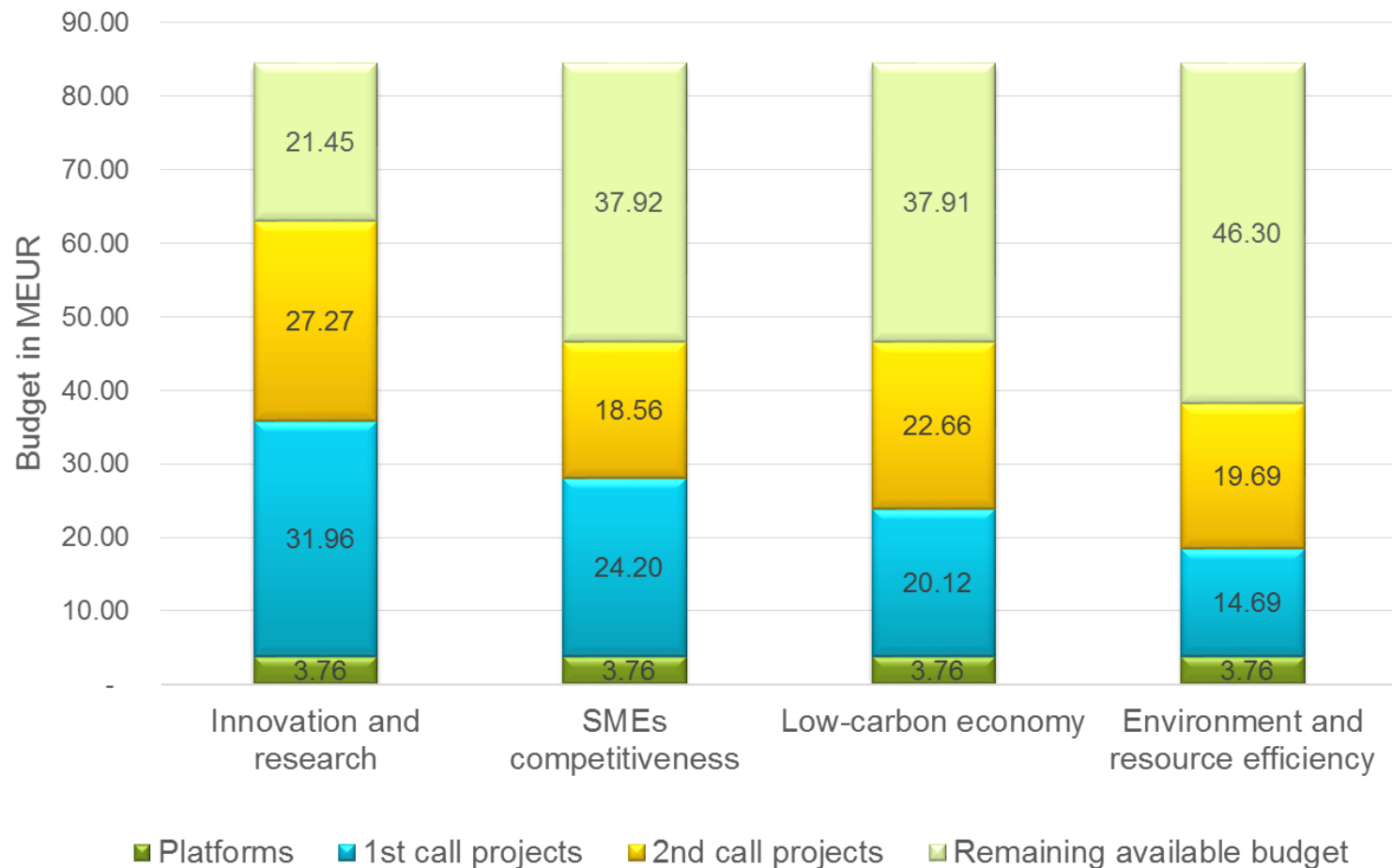
Partners by legal status



Call results



Budget allocation so far

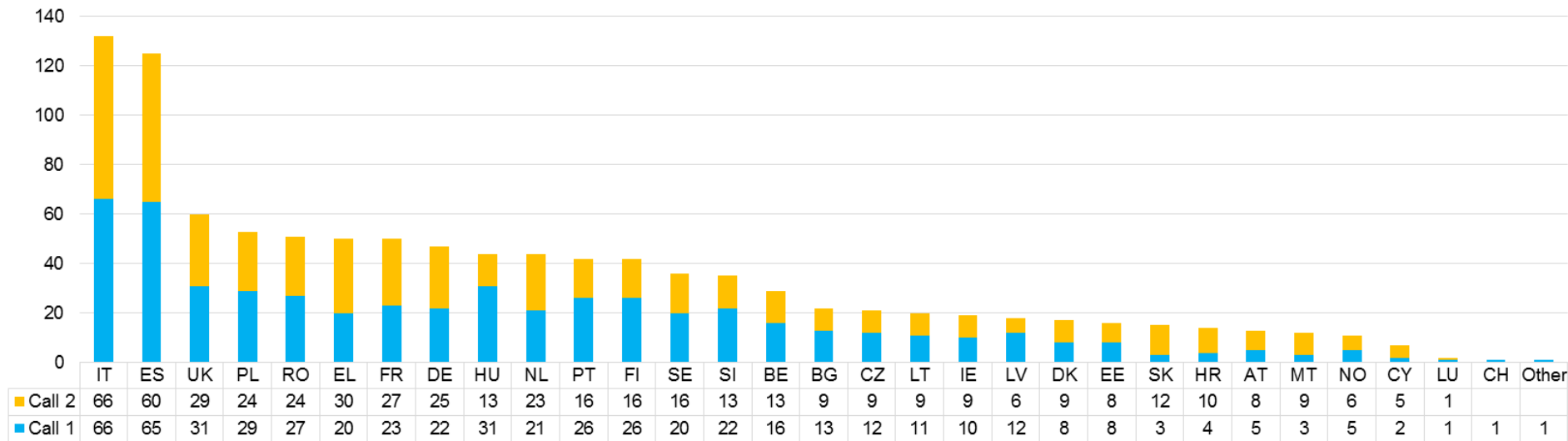




Partners in approved projects

N° of partners per country

Partners in approved projects



All partner states represented in approved projects.

Examples of 'topics' in the two calls



Innovation and research

- RIS3 - sector/ governance (e.g. P2L2, HIGHER)
- Social innovation (e.g. OSIRIS)



SME competitiveness

- Microfinancing (e.g. ATMforSMEs)
- Internationalisation (e.g. SIE)
- Social enterprises (e.g. SOCIAL-SEEDS)

Example of 'topics' in the two calls



Low-carbon economy

- Energy efficiency in social housing (e.g. Social Green)
- Near zero CO2 emission buildings (e.g. ZERO CO2)



Environment and resource efficiency

- Biodiversity information management (e.g. BID-REX)
- Circular economy (e.g. RETRACE)
- Waste management in heritage cities (e.g. INTHERWASTE)



For more information

Programme website

- www.interregeurope.eu

Programme manual

- www.interregeurope.eu/help/programme-manual/

Interreg Europe community

- www.interregeurope.eu/account/dashboard/

**Interreg
Europe**



European Union | European Regional Development Fund



*Sharing solutions
for better regional policies*

Thank you!



Interregeurope